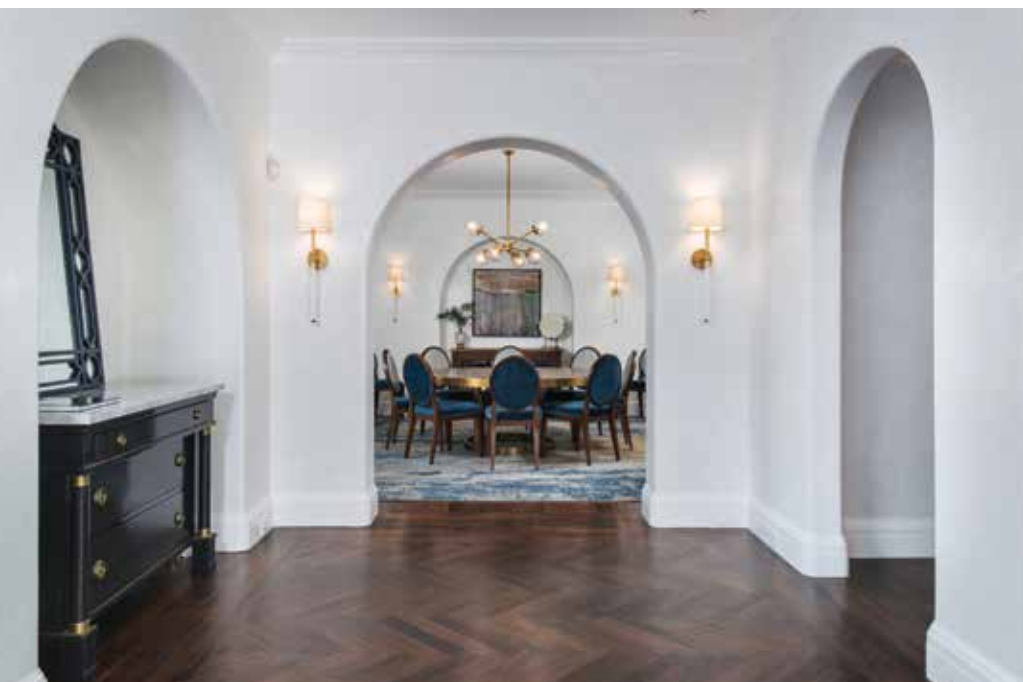


as seen in
athome
IN FAIRFIELD COUNTY
magazine



entryway | FINALISTS

Thompson Raissis Architecture

The owners of this Greenwich waterfront home acquired a love of Mediterranean-style architecture while living on the West Coast. Architect Scott Raissis envisioned the home as “a transitional Mediterranean villa—inspired by the classical style but fully adapted to the modern day.”

Traditional white stucco walls and wooden beams are married with modern metal windows and doors, which flood the entry with natural light and treat arriving guests to a sneak peek at the stunning cove.

The architect’s eye for detail is apparent throughout the space. The stairway, made of solid American walnut with a custom handrail and hammer-finished wrought-iron balusters, is a favorite feature. The custom wainscoting and base molding, which are rolled around corners and through the traditional arched doorways, are a unique and elegant feature. A built-in black-walnut wardrobe, in place of a hall closet, sets this entryway apart.

— BY JILL JOHNSON MANN

PROFESSIONALS

Architect

Thompson Raissis Architects
@thompson_raissis_architects
Darien; 203-399-0100
tr-architects.com

General Contractor

RT Management
Darien; 203-399-0100
tr-architects.com

Landscape Designer

Rosalia Sanni Design
Greenwich; 203-918-4619
rosaliasanni.com

Wood Floors

High Gate Wood Floors
Milford; 203-745-9488
highgatewoodfloors.com

Wood Finishing

Stephen Gamble Historic Floors and Finishes
Greenwich; 203-866-0892
stephengamble.com

PHOTOGRAPHY BY STEVE ROSSI